

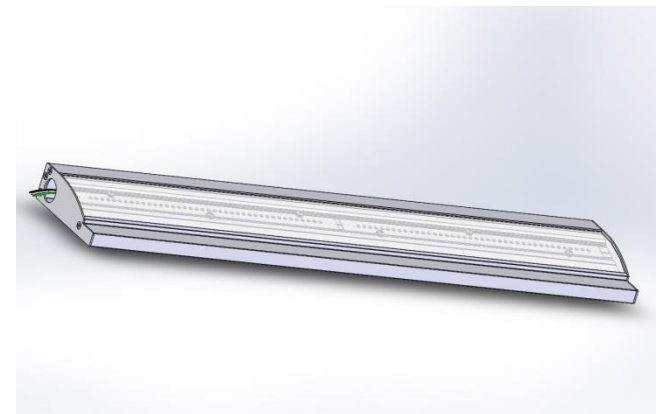


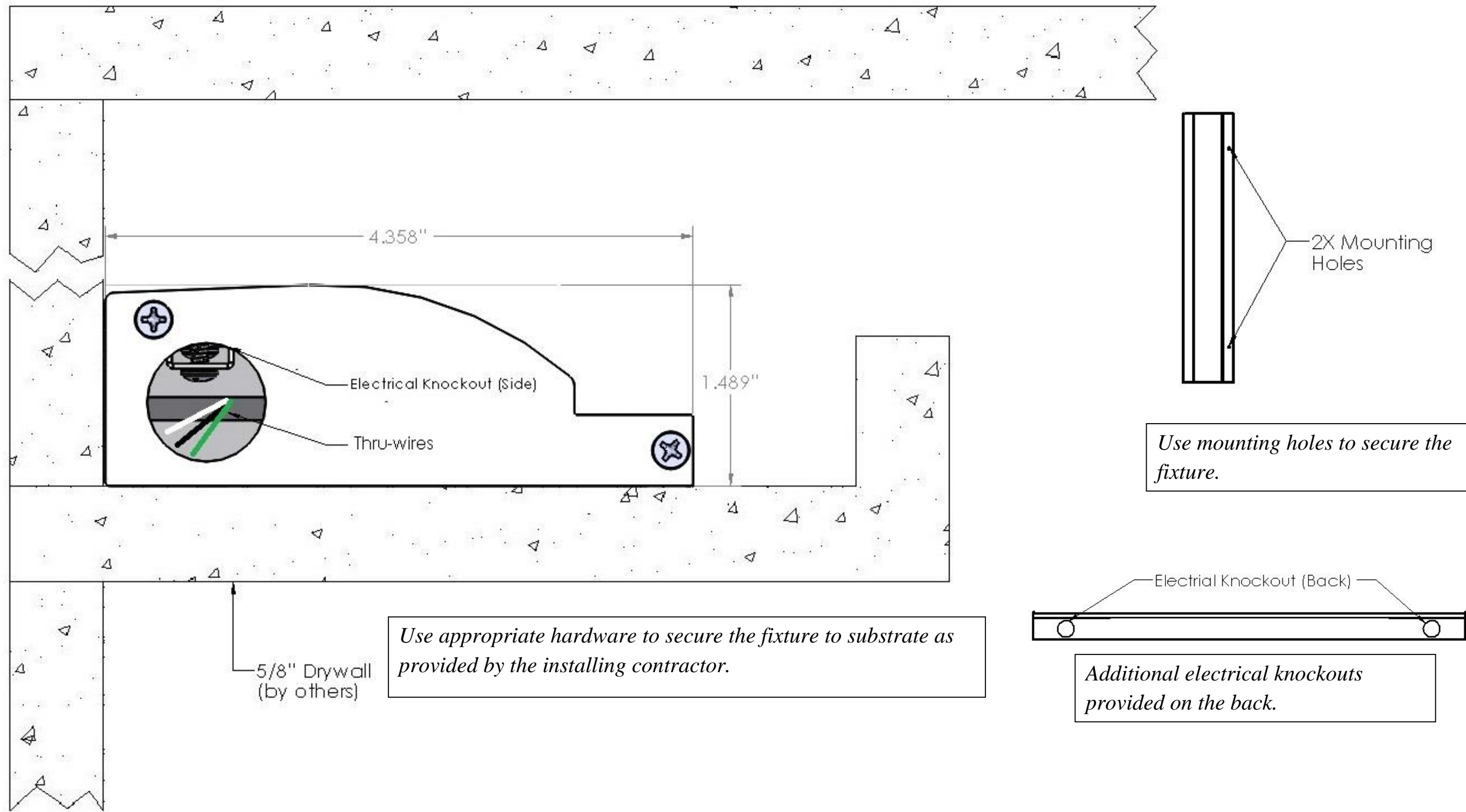
Ghost Cove GLX LED

Installation must be performed by a licensed electrician, and must adhere to both local and national electric codes.

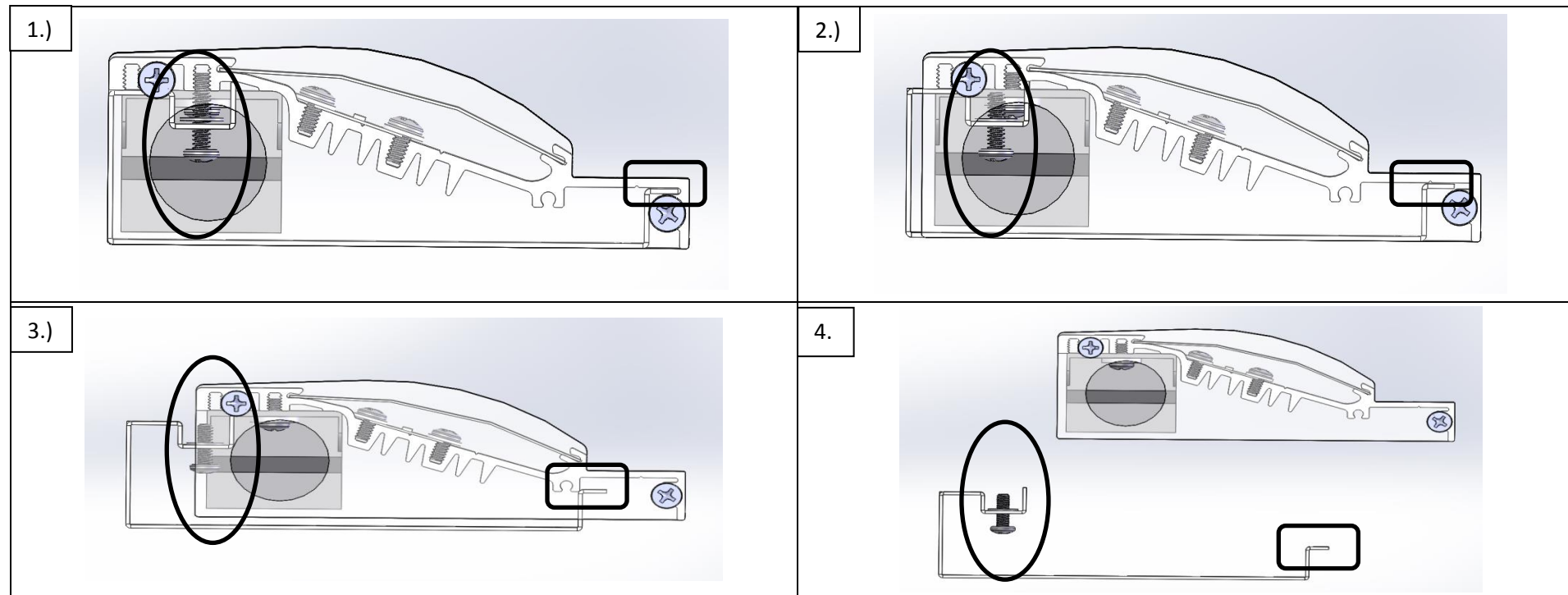
Installation Instructions

Ghost Cove GLX LED





Ghost Cove Lay In fixtures can be mounted directly on a secure surface in a cove. Several fixtures can be installed in desired combination of lengths to obtain a straight run.



Bottom cover plate is removable for field wiring and driver access.

Note: Do not unscrew all the way.

Installation Steps: *(Ensure that power is OFF before mounting and connecting the fixtures)*

1. Lay out the fixtures so that bottom cover plate rests effortlessly on the mounting surface of the cove.
2. Rotate and position the fixtures as necessary to provide unobstructed access to the mounting holes.
3. Position the first fixture in a series. Orient the fixture such that the lens (curved surface) faces the area that needs to be illuminated.
4. Once the location of the fixture is determined, secure it using appropriate hardware. Position the next fixture in the series.
5. Connect the fixtures by through-wiring for branch circuit connectivity. Dimming note if required: For low voltage 0-10V dimming setup, connect Purple and Gray leads from each driver to low voltage 18 gauge signal wire back to controller. Signal wire and dimming controllers supplied by others.
6. Continue mounting the fixtures and making electrical connections until all the fixtures in the series are installed and connected. Primary line feed connects from J-box to through wiring via quick connectors.
7. Energize the circuit.

